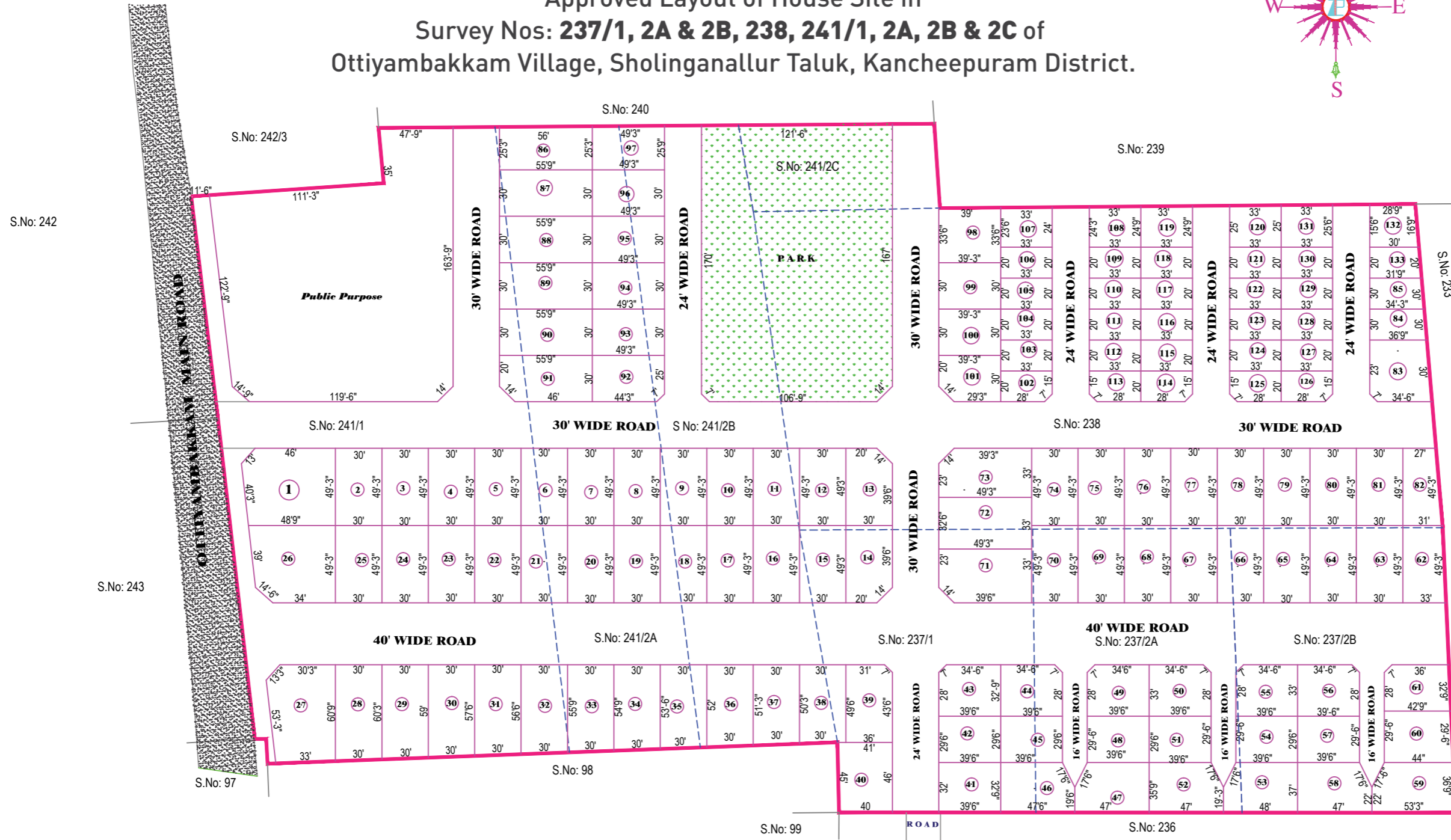
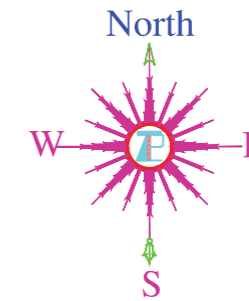


te ll us Avenue

C.M.D.A. APPROVED NO: 36/2017

Approved Layout of House Site in
Survey Nos: 237/1, 2A & 2B, 238, 241/1, 2A, 2B & 2C of
Ottiyambakkam Village, Sholinganallur Taluk, Kancheepuram District.



PLOT NO	SURVEY NO.	EXTENT
81	238	1478
82	238	1428
83	238	1055
84	238	1065
85	238	990
86	241/2A	1411
87	241/1 & 241/2A	1673
88	241/1 & 241/2A	1673
89	241/1 & 241/2A	1673
90	241/1 & 241/2A	1673

PLOT NO	SURVEY NO.	EXTENT
91	241/1 & 241/2A	1626
92	241/2A & 241/2B	1465
93	241/2A & 241/2B	1478
94	241/2A & 241/2B	1478
95	241/2A & 241/2B	1478
96	241/2A & 241/2B	1478
97	241/2A & 241/2B	1256
98	238	1311
99	238	1178
100	238	1178

PLOT NO	SURVEY NO.	EXTENT
101	238	1128
102	238	648
103	238	660
104	238	660
105	238	660
106	238	660
107	238	784
108	238	809
109	238	660
110	238	660

PLOT NO	SURVEY NO.	EXTENT
111	238	660
112	238	660
113	238	648
114	238	648
115	238	660
116	238	660
117	238	660
118	238	660
119	238	817
120	238	825

PLOT NO	SURVEY NO.	EXTENT
121	238	660
122	238	660
123	238	660
124	238	660
125	238	648
126	238	648
127	238	660
128	238	660
129	238	660
130	238	660
131	238	833
132	238	474
133	238	618

PLOT NO	SURVEY NO.	EXTENT IN SQ.FTS.
1	241/1	2539
2	241/1	1478
3	241/1	1478
4	241/1	1478
5	241/1	1478
6	241/1 & 241/2A	1478
7	241/2A	1478
8	241/2A	1478
9	241/2A & 241/2B	1478
10	241/2B	1478
11	241/2B & 238	1478
12	238	1478
13	238	1431
14	237/1 & 238	1431
15	237/1, 238 & 241/2B	1478
16	241/2B	1478
17	241/2B	1478
18	241/2A & 241/2B	1478
19	241/2A	1478
20	241/2A	1478
21	241/1 & 241/2A	1478
22	241/1	1478
23	241/1	1478
24	241/1	1478
25	241/1	1478
26	241/1	2204
27	241/1	2229
28	241/1	1815
29	241/1	1789
30	241/1	1748
31	241/1	1710
32	241/1 & 241/2A	1684
33	241/1 & 241/2A	1658
34	241/2A	1624
35	241/2A & 241/2B	1583
36	241/2B	1549
37	241/2B	1523
38	237/1 & 241/2B	1496
39	237/1	1752
40	237/1	1843
41	237/1	1279
42	237/1	1165
43	237/1	1286
44	237/1 & 237/2A	1286
45	237/1 & 237/2A	1165
46	237/1 & 237/2A	1556
47	237/2A	1608
48	237/2A	1165
49	237/2A	1286
50	237/2A	1286
51	237/2A	1165
52	237/2A	1582
53	237/2A & 237/2B	1636
54	237/2A & 237/2B	1165
55	237/2A & 237/2B	1286
56	237/2B	1286
57	237/2B	1165
58	237/2B	1701
59	237/2B	1896
60	237/2B	1280
61	237/2B	1364
62	237/2B & 238	1576
63	237/2B & 238	1478
64	237/2B & 238	1478
65	237/2B & 238	1478
66	237/2A, 237/2B & 238	1478
67	237/2A & 238	1478
68	237/2A & 238	1478
69	237/2A & 238	1478
70	237/1, 237/2A & 238	1478
71	237/1	1579
72	237/1 & 238	1613
73	238	1575
74	238	1478
75	238	1478
76	238	1478
77	238	1478
78	238	1478
79	238	1478
80	238	1478